

Feeling hungry? Or fancy a freshly ground coffee?

THE FIREMAN'S SHOVEL

We're keeping a welcome on the hillside for you at the Fireman's Shovel refreshment room.

Sit inside and savour the vintage atmosphere, or enjoy your refreshments amidst stunning scenery on the platform.

We stock a variety of treats & snacks, including a wide range of hot and cold drinks, through to Sidoli's ice cream!

WELL BEHAVED DOGS ARE WELCOME!

If you have any specific dietary requirements or want anything altered in your order, please ask. Much of our food is made fresh to order and we can often be flexible!



SANDWICHES - ICE-CREAM - COLD DRINKS - MILKSHAKES - PASTIES - FRESH COFFEE



STATION FACILITIES

WHISTLE INN HALT



FURNACE SIDINGS



BIG PIT HALT



BLAENAVON HIGH LEVEL



BIG PIT HALT: WITH THE EXCEPTION OF THE WAITING ROOM, ALL FACILITIES ARE OPERATED BY NATIONAL MUSEUMS AND GALLERIES OF WALES. CALL FOR DETAILS 0300 111 2333, **THE CAR-PARK IS PAY AND DISPLAY.**

THE PUBLIC HOUSE AT **WHISTLE INN HALT:** IS PRIVATELY RUN, AND THE PICNIC AREA, TOILETS AND CAR PARK ARE FOR VISITORS OF THE BUSINESS. CALL TO CHECK OPENING HOURS - 01495 790403



Explore the world heritage site from the footplate!



The perfect gift!

HERITAGE EXPERIENCE

From only
£50

Are you looking for a gift to celebrate a special occasion?
Or perhaps you'd like to treat yourself?

WHAT'S INCLUDED?

- A choice of Steam or Diesel experience!
- A full round trip with the driver on the footplate, lasting just over an hour
 - A further round trip assisting the guard
- A complimentary ticket for a companion to ride on the train
 - A certificate to commemorate the day

For more information, speak to one of our friendly volunteers or email us to discuss your requirements. Please see our website for full terms & conditions.

BECOME A MEMBER BECOME A VOLUNTEER

Our railway is operated and maintained by a small group of dedicated volunteers, and we're always on the look out for new recruits! Skilled, unskilled, physical or clerical, all efforts are respected and welcomed.

Membership starts from only **£7.50** a year for under 18s & **£15.00** a year for adults.



Explore the benefits of becoming a member by visiting our website!

SIGN UP TODAY!

WWW.PBRLY.CO.UK/MEMBERSHIP

HOW TO FIND US

We are just off the **B4248** At Garn-Yr-Erw between Blaenavon & Brynmawr. As you get closer to the railway, look out for brown and white train sign.

Post code for SatNav is **NP4 9AX**.
Travelling by train or bus? See our website for details.

Services are operated by **The Pontypool & Blaenavon Railway Co. (1983) Ltd.** We always strive to provide the advertised service. However, the Company reserves the right to modify or cancel services when circumstances dictate. Please visit our website for the full terms and conditions of travel.

The company is a **registered charity no. 514809**.
limited by guarantee and operates on a not-for-profit basis.
INFO@PBRLY.CO.UK // WWW.PBRLY.CO.UK

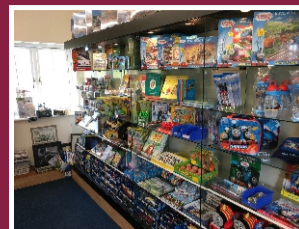


Photographs by: Alistair Grieve, Alan Parry & Steve Thomas
Leaflet designed by Thomas Edwards ~ www.edwardsprint.co.uk

Gift shopping? Look no further!

ERIC'S EMPORIUM

Our little on-site shop, named after and dedicated to long-serving volunteer **Eric Edwards**, offers a wider range of gifts and souvenirs to commemorate your visit, as well as children's toys, books, and an extensive range of model railway supplies!



Eric's Emporium is open every running day of the season! If you cannot wait until then, why not **VISIT OUR RAILWAY SHOP** Open Monday - Saturday

VISIT THE RAILWAY SHOP PONTYPOOL & BLAENAVON RAILWAY SOCIETY

OPENING TIMES

MONDAY-FRIDAY / 10:30 AM TILL 5 PM
SATURDAY / 10:30 AM TILL 4 PM SUNDAY / CLOSED
📍 33 BROAD ST, BLAENAVON, TORFAEN, NP4 9NF 📞 01495 792263

MODEL RAILWAY CLUB

The Pontypool & Blaenavon Model Railway Club is based at Furnace Sidings and meets on Tuesdays between 11am and 3pm, and Fridays between 7pm and 10pm.

The club is developing layouts in O, OO, OO9 and N gauge, and is open to members of both the Pontypool and Blaenavon Company and Society. We are also open to the public on selected events throughout the year - contact us for more information.

The club is very active and always welcomes new members, regardless of skill, ability or age.

FOR FURTHER DETAILS

Telephone: 01495 792263

Email: PBMRC@torfaen.plus.com

Facebook: www.facebook.com/groups/PandBMRC



INFORMATION, EVENTS & TIMETABLE 2020

BLAENAVON'S HERITAGE RAILWAY



PAY ONCE, RIDE ALL DAY!
A GREAT DAY OUT, WHATEVER THE WEATHER!

TRAVEL ON THE HIGHEST STANDARD
GAUGE RAILWAY IN WALES
THROUGH THE STUNNING
UNESCO WORLD HERITAGE SITE

📞 01495 792263

WWW.PBRLY.CO.UK

📍 THE RAILWAY STATION, FURNACE SIDINGS,
GARN YR ERW, BLAENAVON, PONTYPOOL, NP4 9AX

📷 /pbrailway 📱 /pbrailway 📧 @pb_railway

EVENTS & CALENDAR

HERITAGE RAILWAY



DATES	EVENTS	APRIL	MAY	JUNE	JULY	AUGUST
April 4th & 5th	Volunteer Recruitment Weekend	M T W T F S S 4 5	M T W T F S S 2 3	M T W T F S S 6 7	M T W T F S S 4 5	M T W T F S S 1 2
April 10th - 13th	Easter Weekend	10 11 12	8 9 10	13 14	11 12	5 8 9
May 8th - 10th	VE Bank Holiday	13 18 19 25 26	16 17 23 24 30 31	20 21 27 28	18 19	12 15 16
May 24th & 25th	Coal Train Weekend		25 27		22 25 26 29	19 22 23 26 29 30
June 13th & 14th	Model Railway Show					31
July 18th & 19th	Steampunk Extraordinary					
August 30th & 31st	Classic Transport Rally					
September 11th - 13th	Annual Steam Gala					
October 28th - 31st	Halloween Ghost Trains					
Throughout December	Steam Santa Specials					

We operate on weekends between Easter and late September, selected Wednesdays during school holidays, and at Halloween and Christmas.

KEYS

STEAM RUNNING DAY

DIESEL RUNNING DAY

VINTAGE TRAIN RUNNING DAY

SPECIAL EVENT DAY

NEW FOR 2020

GIFT VOUCHERS
BRAND NEW WEBSITE
1/3 OFF FOR LOCAL RESIDENTS*

*Simply show valid ID at the ticket office to prove address.
For Blaenavon residents only, excludes special events.

CREAM TEA FOR TWO

ENJOY A RIDE ON THE RAILWAY
& A CREAM TEA FOR TWO

BOOK NOW
FROM ONLY £25.00



WAITING ROOM



FREE CAR PARK



TOILETS



TEA ROOM

PUBLIC HOUSE
near Whistle Inn Halt.

TICKET OFFICE



PICNIC AREA



DISABLED TOILETS



BABY CHANGING



ERIC'S EMPORIUM

TICKETS

ONE
TRAIN
DAYTWO
TRAIN
DAY

ADULT	£9.00	£10.00
CONCESSION	£8.00	£9.00
CHILDREN	£5.00	£5.00
FAMILY (2 ADULTS + 3 CHILDREN)	£23.00	£25.00

DOGS, BIKES & UNDER 3'S GO FREE!

ONE FREE ADULT CARER PER FULL FARE
PAYING DISABLED CHILD/ADULT.

TICKET PRICES MAY DIFFER
ON SPECIAL EVENTS

TIMETABLE A

ONE
TRAIN
DAY

FURNACE SIDINGS D	11:00	12:30	14:15	15:45
WHISTLE INN D	11:07	12:37	14:22	15:52
FURNACE SIDINGS D	X	X	X	X
BIG PIT D	11:18	12:48	14:33	16:03
FURNACE SIDINGS D	11:25	12:55	14:40	16:10
COED AVON D*	11:36	13:06	14:51	16:21
BLAENAVON HIGH LEVEL D	11:55	13:25	15:10	16:40
FURNACE SIDINGS A	12:05	13:35*15:20	16:50	

FURTHER INFORMATION CAN BE FOUND ON OUR WEBSITE
AND ON INFORMATION BOARDS AT EVERY STATION.



WANT TO
LEARN MORE?

CONTINUE THE
HISTORY TIMELINE
ON OUR WEBSITE

OUR STORY

1869-1879

Line opens to goods
and passengers from
Brynmaur to Blaenavon,
and to passengers
only between
Talywain and Pontypool

Passenger service and goods
trains withdrawn;
Pontypool to Brynmaur
Line to Brynmaur

CLOSED!

1941-1954

1981



Big Pit CLOSING
bringing an end to
regular trains on the line.
Last train to Furnace Sidings.

Railway saved
by volunteers
and opens for business.

1983

Photograph:
Tim Goss,
Steve Rooke
& Mark Vrettos



2008

European funding for Blaenavon extension
and Big Pit overhaul approved.

2010

Blaenavon High Level station opens.

2011

Big Pit station opens and Furnace Sidings station
building completed.

2016

Coed Avon extension opens

2018

Work commences on our new carriage shed

2019

150th Anniversary of the first trains to Blaenavon

Visit our website to find out more and to **BOOK TICKETS** for selected events - www.pbrrly.co.uk